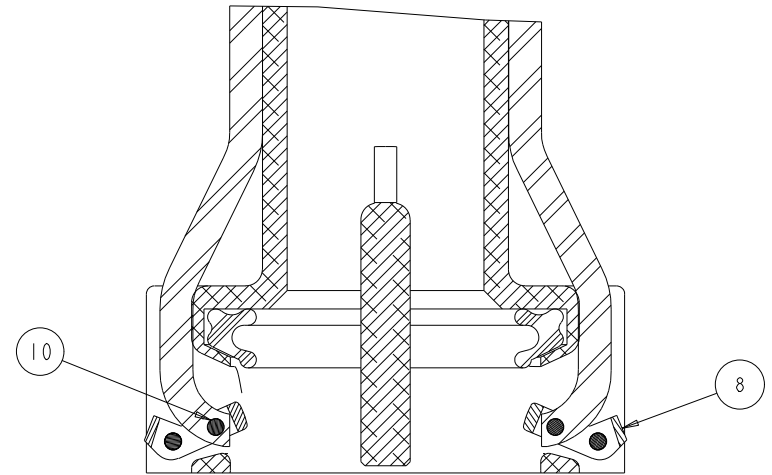
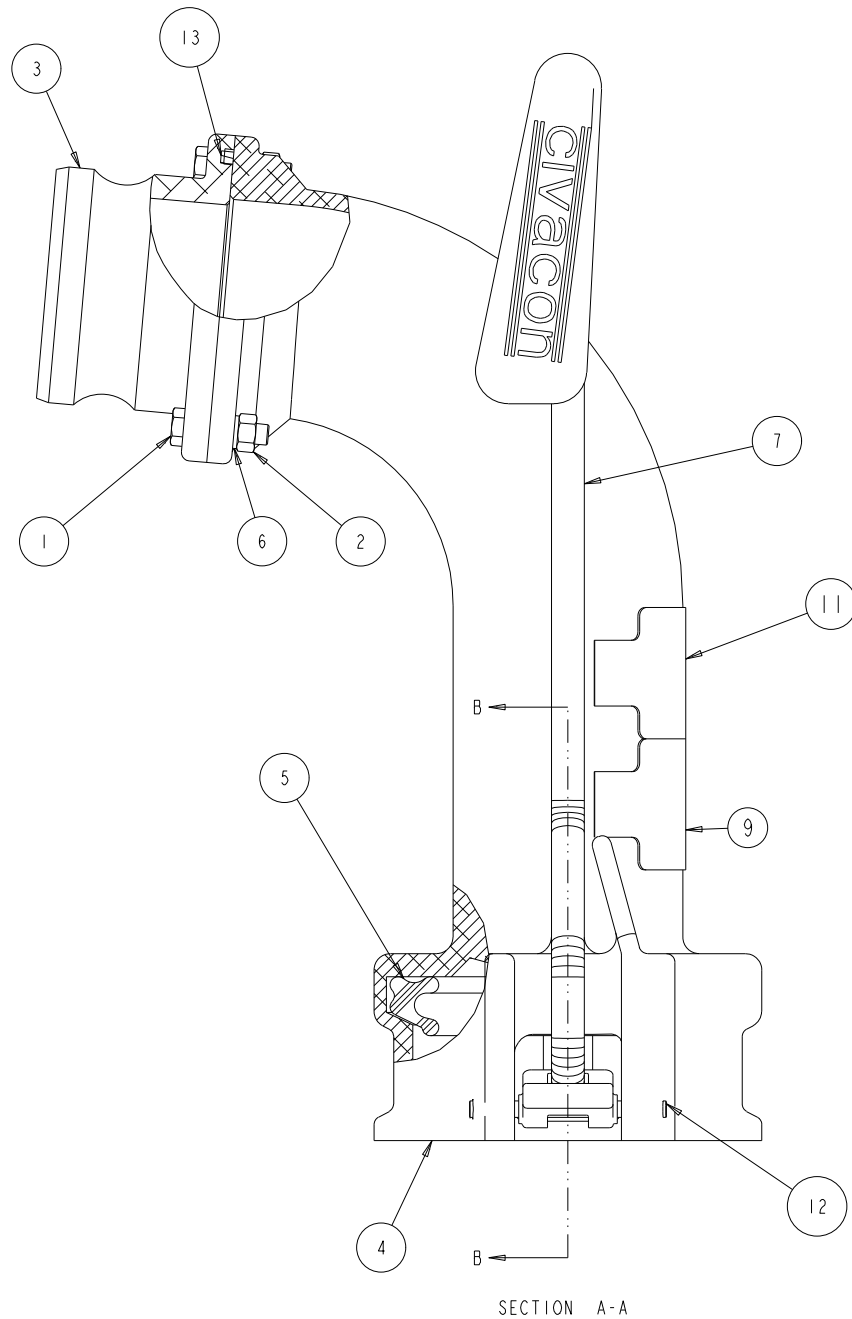



THIS DRAWING IS THE EXCLUSIVE PROPERTY OF KNAPPCO, INC. IT IS SUBMITTED ON THE CONDITIONS THAT THE DESIGNS CONTAINED THEREIN ARE HELD CONFIDENTIAL, AND ARE SUBJECT TO RETURN ON DEMAND.

REV	ESR NUMBER	DESCRIPTION	BY	CHKD	DATE
-	041510-02	RELEASED	RDS	JKH	4/15/10
B	071410-01	ADDED LABELS AND STICK SCREWS	RDS	RDR	7/14/10
C	100714-01	REMOVE P/N's 12226 & H53001M	MHB	SDG	10/7/14



SECTION B-B

ITEM	PART NUMBER	DESCRIPTION	REQD
14	12231PA	MAINTAINANCE MANUAL	1
13	H52373M	GASKET (COVER)	1
12	H20304M	GROOVE PIN 1/4 X 3 LG SS	2
11	H20257M	LABEL	1
10	H20140M	GROOVE PIN 1/4 DIA	2
9	C10104M	LABEL	1
8	C10079A	CAM VAPOR ELBOW	2
7	C10078M	HANDLE VAPOR ELBOW	1
6	10806M	WASHER LOCK M8	4
5	12157	GASKET VAPOR ELBOW	1
4	12064	BODY MACHINED 3" MACHINED	1
3	11588	ADAPTOR	1
2	7816	NUT HHD 5/16-18	4
1	6112	SCREW HHD 5/16-18 X 1" LG	4

<p>TOLERANCES UNLESS OTHERWISE SPECIFIED</p> <p>SURFACE FINISH 63 μIN</p> <p>FRACTIONAL ± 1/16</p> <p>DECIMAL: .00 ± .03</p> <p>ANGLE: .000 ± .010</p>	MATL:	 <b>KNAPPCO CORPORATION</b> 4304 MATTOX ROAD KANSAS CITY, MISSOURI 64150 PHONE: (816)-741-6600 FAX: (816)-741-1061	TITLE: VAPOR ELBOW ASSEMBLY W/ 3" KAMLOK		
	WGHT:		DATE: 4/15/10	SCALE: 3/4	P/N:
	ENGR: RDR		SHT#: 80TT		1/1
	DRAWN BY: RDR				
CHECKED BY: RDR					